

# Florida Vocal Association

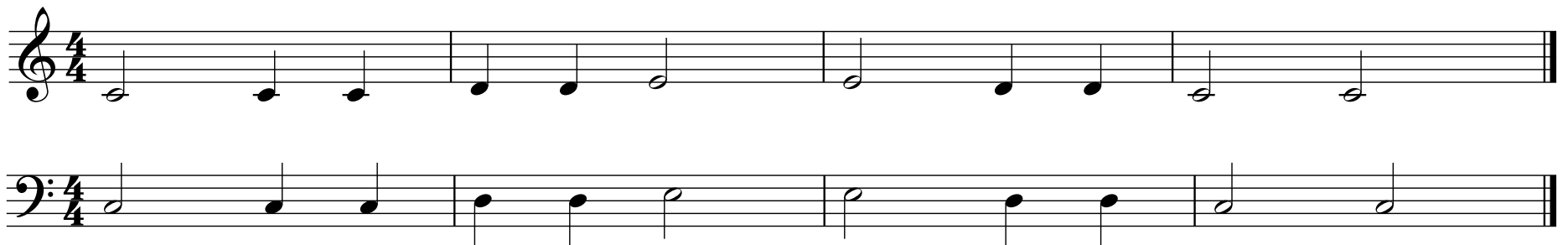
## All-State Sight-Reading Practice Example

Welcome to the Florida Vocal Association's All-State Sight-Reading Audition.

We are going to sing through a practice example to familiarize you with the procedure and pace of the audition. This gives you the opportunity to read and vocalize before being scored.

Let's begin...

1. Scale, arpeggio, starting pitch (*Sing along*)
2. Silent study period (10 seconds)
3. Scale, arpeggio, starting pitch (*Sing along*)
4. Tempo count-off.... sing.



***If you have questions about any of the procedures, please feel free to ask the judge before the audition or in between reading exercises.***

# 2011 - 2012 FVA All State

## Middle School Sight Reading Audition

### Level 1

Musical notation for Level 1: Treble clef, common time signature. The piece consists of 8 measures. The notes are: 1. C4, 2. D4, 3. E4, 4. F4, 5. G4, 6. A4, 7. B4, 8. C5. The notes are written as quarter notes in the first six measures, followed by a half note in the seventh measure, and a whole note in the eighth measure.

### Level 2

Musical notation for Level 2: Treble clef, 3/4 time signature. The piece consists of 8 measures. The notes are: 1. C4, 2. D4, 3. E4, 4. F4, 5. G4, 6. A4, 7. B4, 8. C5. The notes are written as quarter notes in the first six measures, followed by a quarter note in the seventh measure, and a quarter note in the eighth measure.

### Level 3

Musical notation for Level 3: Treble clef, key signature of one sharp (F#), 4/4 time signature. The piece consists of 8 measures. The notes are: 1. C4, 2. D4, 3. E4, 4. F#4, 5. G4, 6. A4, 7. B4, 8. C5. The notes are written as quarter notes in the first six measures, followed by a quarter note in the seventh measure, and a quarter note in the eighth measure.

# 2011 - 2012 FVA All State

## Middle School Sight Reading Audition

### Level 1

Musical notation for Level 1: Bass clef, common time signature. The piece consists of 8 measures. The notes are: 1. G2, 2. A2, 3. B2, 4. C3, 5. D3, 6. E3, 7. F3, 8. G3. The notes are written as quarter notes in pairs: (1,2), (3,4), (5,6), (7,8).

### Level 2

Musical notation for Level 2: Bass clef, 3/4 time signature. The piece consists of 8 measures. The notes are: 1. G2, 2. A2, 3. B2, 4. C3, 5. D3, 6. E3, 7. F3, 8. G3. The notes are written as quarter notes in pairs: (1,2), (3,4), (5,6), (7,8).

### Level 3

Musical notation for Level 3: Bass clef, key signature of one sharp (F#), 4/4 time signature. The piece consists of 8 measures. The notes are: 1. G2, 2. A2, 3. B2, 4. C3, 5. D3, 6. E3, 7. F#3, 8. G3. The notes are written as quarter notes in pairs: (1,2), (3,4), (5,6), (7,8).

# 2011 - 2012 FVA All State

## Middle School Sight Reading Audition

### Level 1

Musical notation for Level 1: Treble clef, common time signature. The piece consists of 8 measures. Measure numbers 1 through 8 are indicated above the staff. The melody is: G4 (quarter), A4 (quarter), B4 (quarter), C5 (quarter), B4-A4 (beamed eighth notes), G4 (quarter), F4 (quarter), E4 (quarter), D4 (quarter), C4 (quarter), B3 (quarter), A3 (quarter), G3 (quarter), F3 (quarter), E3 (quarter), D3 (quarter), C3 (quarter).

### Level 2

Musical notation for Level 2: Treble clef, 3/4 time signature. The piece consists of 8 measures. Measure numbers 1 through 8 are indicated above the staff. The melody is: G4 (quarter), A4 (quarter), B4 (quarter), C5 (quarter), B4-A4 (beamed eighth notes), G4 (quarter), F4 (quarter), E4 (quarter), D4 (quarter), C4 (quarter), B3 (quarter), A3 (quarter), G3 (quarter), F3 (quarter), E3 (quarter), D3 (quarter), C3 (quarter).

### Level 3

Musical notation for Level 3: Treble clef, key signature of one sharp (F#), 4/4 time signature. The piece consists of 8 measures. Measure numbers 1 through 8 are indicated above the staff. The melody is: G4 (quarter), A4 (quarter), B4 (quarter), C5 (quarter), B4-A4 (beamed eighth notes), G4 (quarter), F4 (quarter), E4 (quarter), D4 (quarter), C4 (quarter), B3 (quarter), A3 (quarter), G3 (quarter), F3 (quarter), E3 (quarter), D3 (quarter), C3 (quarter).

# 2011 - 2012 FVA All State

## High School Sight Reading Audition

### Level 1

Musical notation for Level 1: Treble clef, common time (C). The piece consists of 8 measures. The notes are: 1. G4, 2. A4, 3. B4, 4. C5, 5. B4, 4. A4, 3. G4, 6. F4, 5. E4, 4. D4, 3. C4, 7. B3, 8. A3. The final measure ends with a double bar line.

### Level 2

Musical notation for Level 2: Treble clef, common time (C). The piece consists of 8 measures. The notes are: 1. G4, 2. A4, 3. B4, 4. C5, 5. B4, 4. A4, 3. G4, 6. F4, 5. E4, 4. D4, 3. C4, 7. B3, 8. A3. The final measure ends with a double bar line.

### Level 3

Musical notation for Level 3: Treble clef, 3/4 time. The piece consists of 8 measures. The notes are: 1. G4, 2. A4, 3. B4, 4. C5, 5. B4, 4. A4, 3. G4, 6. F4, 5. E4, 4. D4, 3. C4, 7. B3, 8. A3. The final measure ends with a double bar line.

# Level 4

Musical notation for Level 4, measures 1-8. The key signature is one sharp (F#) and the time signature is 6/8. The notation is on a single treble clef staff. Measures 1-4 are grouped under a first slur with fingerings 1, 2, 3, and 4. Measures 5-8 are grouped under a second slur with fingerings 5, 6, 7, and 8. The piece concludes with a double bar line.

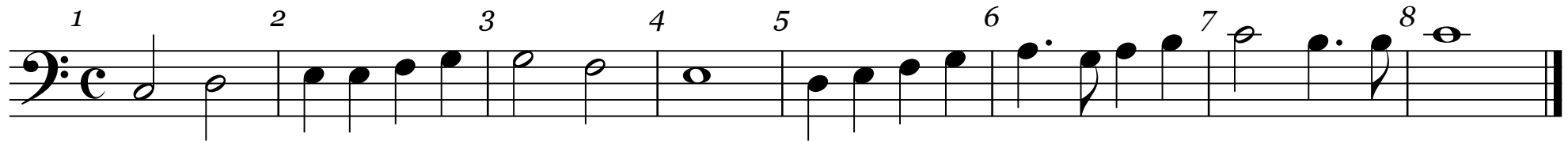
# Level 5

Musical notation for Level 5, measures 1-8. The key signature is one sharp (F#) and the time signature is common time (C). The notation is on a single treble clef staff. Measures 1-4 are grouped under a first slur with fingerings 1, 2, 3, and 4. Measures 5-8 are grouped under a second slur with fingerings 5, 6, 7, and 8. The piece concludes with a double bar line.

# 2011 - 2012 FVA All State


## High School Sight Reading Audition

### Level 1



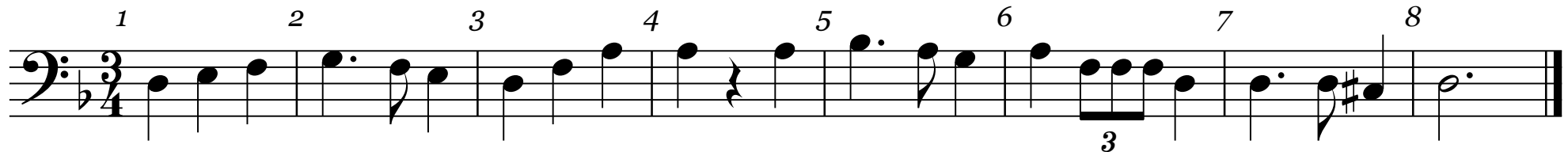
Musical notation for Level 1, bass clef, common time (C). The piece consists of 8 measures. Measure 1: G2, A2, B2. Measure 2: C3, D3, E3. Measure 3: F3, G3, A3. Measure 4: B3, C4, D4. Measure 5: E4, F4, G4. Measure 6: A4, B4, C5. Measure 7: D5, E5, F5. Measure 8: G5, A5, B5.

### Level 2



Musical notation for Level 2, bass clef, common time (C). The piece consists of 8 measures. Measure 1: G2, A2, B2, C3. Measure 2: D3, E3, F3, G3. Measure 3: A3, B3, C4, D4. Measure 4: E4, F4, G4, A4. Measure 5: B4, C5, D5, E5. Measure 6: F5, G5, A5, B5. Measure 7: C6, D6, E6, F6. Measure 8: G6, A6, B6, C7.

### Level 3



Musical notation for Level 3, bass clef, 3/4 time. The piece consists of 8 measures. Measure 1: G2, A2, B2. Measure 2: C3, D3, E3. Measure 3: F3, G3, A3. Measure 4: B3, C4, D4. Measure 5: E4, F4, G4. Measure 6: A4, B4, C5. Measure 7: D5, E5, F5. Measure 8: G5, A5, B5.

# Level 4

Musical notation for Level 4, measures 1-8. The key signature is one sharp (F#) and the time signature is 6/8. The notation is on a bass clef staff. Measures 1-4 are grouped together with a bracket above them, and measures 5-8 are grouped together with a bracket above them. Fingerings are indicated by numbers 1-4 above the notes. Measure 7 contains a fermata over the final note.

# Level 5

Musical notation for Level 5, measures 1-8. The key signature is one sharp (F#) and the time signature is common time (C). The notation is on a bass clef staff. Measures 1-4 are grouped together with a bracket above them, and measures 5-8 are grouped together with a bracket above them. Fingerings are indicated by numbers 1-4 above the notes. Measure 1 has a fermata over the first note. Measure 2 has a slur over the first two notes. Measure 7 contains a triplet of eighth notes.