

Florida Vocal Association

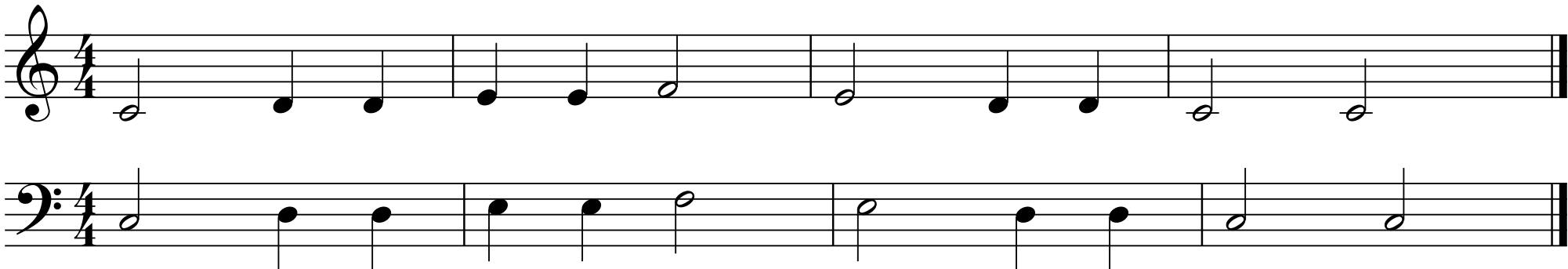
All State Sight-Reading Practice Example

Welcome to the Florida Vocal Association's All-State Sight-Reading Audition.

We are going to sing through a practice example to familiarize you with the procedure and pace of the audition. This gives you the opportunity to read and vocalize before being scored.

Let's begin...

1. Scale, arpeggio, starting pitch (Sing along)
2. Silent study period (10 seconds)
3. Scale, arpeggio, starting pitch (Sing along)
4. Tempo count-off.... sing.



If you have questions about any of the procedures, please feel free to ask the judge before the audition or in between reading exercises.

FVA All State 2012 - 2013

Middle School Sight Reading Audition

Level 1

1 2 3 4 5 6 7 8

Musical notation for Level 1: Treble clef, 4/4 time signature. The melody consists of 8 measures. Measure 1: quarter note G4, quarter note A4, quarter note B4, quarter note C5. Measure 2: quarter note D5, quarter note E5, quarter note F5, quarter note G5. Measure 3: quarter note A5, quarter note B5, quarter note C6, quarter note D6. Measure 4: quarter note E6, quarter note F6, quarter note G6, quarter note A6. Measure 5: quarter note B6, quarter note C7, quarter note D7, quarter note E7. Measure 6: quarter note F7, quarter note G7, quarter note A7, quarter note B7. Measure 7: quarter note C8, quarter note B7, quarter note A7, quarter note G7. Measure 8: quarter note F7, quarter note E7, quarter note D7, quarter note C7.

Level 2

1 2 3 4 5 6 7 8

Musical notation for Level 2: Treble clef, 3/4 time signature. The melody consists of 8 measures. Measure 1: quarter note G4, quarter note A4, quarter note B4, quarter note C5. Measure 2: quarter note D5, quarter note E5, quarter note F5, quarter note G5. Measure 3: quarter note A5, quarter note B5, quarter note C6, quarter note D6. Measure 4: quarter note E6, quarter note F6, quarter note G6, quarter note A6. Measure 5: quarter note B6, quarter note C7, quarter note D7, quarter note E7. Measure 6: quarter note F7, quarter note G7, quarter note A7, quarter note B7. Measure 7: quarter note C8, quarter note B7, quarter note A7, quarter note G7. Measure 8: quarter note F7, quarter note E7, quarter note D7, quarter note C7.

Level 3

1 2 3 4 5 6 7 8

Musical notation for Level 3: Treble clef, 4/4 time signature with two sharps (F# and C#). The melody consists of 8 measures. Measure 1: quarter note G4, quarter note A4, quarter note B4, quarter note C5. Measure 2: quarter note D5, quarter note E5, quarter note F5, quarter note G5. Measure 3: quarter note A5, quarter note B5, quarter note C6, quarter note D6. Measure 4: quarter note E6, quarter note F6, quarter note G6, quarter note A6. Measure 5: quarter note B6, quarter note C7, quarter note D7, quarter note E7. Measure 6: quarter note F7, quarter note G7, quarter note A7, quarter note B7. Measure 7: quarter note C8, quarter note B7, quarter note A7, quarter note G7. Measure 8: quarter note F7, quarter note E7, quarter note D7, quarter note C7.

FVA All State 2012 - 2013

Middle School Sight Reading Audition

Level 1

1 2 3 4 5 6 7 8

Musical notation for Level 1: Bass clef, 4/4 time signature. The piece consists of 8 measures. Measure 1: G2, A2, B2. Measure 2: C3, D3, E3. Measure 3: F3, G3, A3. Measure 4: B3, C4, D4. Measure 5: E4, F4, G4. Measure 6: A4, B4, C5. Measure 7: D5, E5, F5. Measure 8: G5, F5, E5.

Level 2

1 2 3 4 5 6 7 8

Musical notation for Level 2: Bass clef, 3/4 time signature. The piece consists of 8 measures. Measure 1: G2, A2, B2. Measure 2: C3, D3, E3. Measure 3: F3, G3, A3. Measure 4: B3, C4, D4. Measure 5: E4, F4, G4. Measure 6: A4, B4, C5. Measure 7: D5, E5, F5. Measure 8: G5, F5, E5.

Level 3

1 2 3 4 5 6 7 8

Musical notation for Level 3: Bass clef, 4/4 time signature with two sharps (F# and C#). The piece consists of 8 measures. Measure 1: G2, A2, B2. Measure 2: C3, D3, E3. Measure 3: F3, G3, A3. Measure 4: B3, C4, D4. Measure 5: E4, F4, G4. Measure 6: A4, B4, C5. Measure 7: D5, E5, F5. Measure 8: G5, F5, E5.

FVA All State 2012 - 2013

Middle School Sight Reading Audition

Level 1

1 2 3 4 5 6 7 8

Musical notation for Level 1, featuring a treble clef, key signature of one flat (Bb), and 4/4 time signature. The piece consists of 8 measures of music, starting with a quarter rest in the first measure, followed by a sequence of quarter notes: G2, A2, Bb2, C3, D3, E3, F3, G3, A3, Bb3, C4, D4, E4, F4, G4, A4, Bb4, C5, D5, E5, F5, G5, A5, Bb5, C6, Bb5, A5, G5, F5, E5, D5, C5. The piece ends with a double bar line.

Level 2

1 2 3 4 5 6 7 8

Musical notation for Level 2, featuring a treble clef, key signature of one flat (Bb), and 3/4 time signature. The piece consists of 8 measures of music, starting with a quarter rest in the first measure, followed by a sequence of quarter notes: G2, A2, Bb2, C3, D3, E3, F3, G3, A3, Bb3, C4, D4, E4, F4, G4, A4, Bb4, C5, D5, E5, F5, G5, A5, Bb5, C6, Bb5, A5, G5, F5, E5, D5, C5. The piece ends with a double bar line.

Level 3

1 2 3 4 5 6 7 8

Musical notation for Level 3, featuring a treble clef, key signature of one sharp (F#), and 4/4 time signature. The piece consists of 8 measures of music, starting with a quarter rest in the first measure, followed by a sequence of quarter notes: G2, A2, B2, C3, D3, E3, F#3, G3, A3, B3, C4, D4, E4, F#4, G4, A4, B4, C5, D5, E5, F#5, G5, A5, B5, C6, B5, A5, G5, F#5, E5, D5, C5. The piece ends with a double bar line.

FVA All State 2012 - 2013

High School Sight Reading Audition

Level 1

1 2 3 4 5 6 7 8

Musical notation for Level 1: Treble clef, 4/4 time signature. The piece consists of 8 measures. Measure 1: C4 quarter, D4 quarter, E4 quarter, F4 quarter. Measure 2: G4 quarter, A4 quarter, B4 quarter, C5 quarter. Measure 3: B4 quarter, A4 quarter, G4 quarter, F4 quarter. Measure 4: E4 quarter, D4 quarter, C4 quarter, B3 quarter. Measure 5: A3 quarter, G3 quarter, F3 quarter, E3 quarter. Measure 6: D3 quarter, C3 quarter, B2 quarter, A2 quarter. Measure 7: G2 quarter, F2 quarter, E2 quarter, D2 quarter. Measure 8: C2 quarter, B1 quarter, A1 quarter, G1 quarter.

Level 2

1 2 3 4 5 6 7 8

Musical notation for Level 2: Treble clef, 4/4 time signature. The piece consists of 8 measures. Measure 1: C4 quarter, D4 quarter, E4 quarter, F4 quarter. Measure 2: G4 quarter, A4 quarter, B4 quarter, C5 quarter. Measure 3: B4 quarter, A4 quarter, G4 quarter, F4 quarter. Measure 4: E4 quarter, D4 quarter, C4 quarter, B3 quarter. Measure 5: A3 quarter, G3 quarter, F3 quarter, E3 quarter. Measure 6: D3 quarter, C3 quarter, B2 quarter, A2 quarter. Measure 7: G2 quarter, F2 quarter, E2 quarter, D2 quarter. Measure 8: C2 quarter, B1 quarter, A1 quarter, G1 quarter.

Level 3

1 2 3 4 5 6 7 8

Musical notation for Level 3: Treble clef, 4/4 time signature. The piece consists of 8 measures. Measure 1: C4 quarter, D4 quarter, E4 quarter, F4 quarter. Measure 2: G4 quarter, A4 quarter, B4 quarter, C5 quarter. Measure 3: B4 quarter, A4 quarter, G4 quarter, F4 quarter. Measure 4: E4 quarter, D4 quarter, C4 quarter, B3 quarter. Measure 5: A3 quarter, G3 quarter, F3 quarter, E3 quarter. Measure 6: D3 quarter, C3 quarter, B2 quarter, A2 quarter. Measure 7: G2 quarter, F2 quarter, E2 quarter, D2 quarter. Measure 8: C2 quarter, B1 quarter, A1 quarter, G1 quarter.

Level 4

1 2 3 4

Musical notation for Level 4, measures 1-4. Treble clef, key signature of one sharp (F#), 6/8 time signature. Measure 1: quarter note G4, quarter note A4, quarter note B4, quarter note C5, quarter note B4, quarter note A4. Measure 2: quarter note G4, quarter note A4, quarter note B4, quarter note C5, quarter note B4, quarter note A4. Measure 3: quarter note G4, quarter note A4, quarter note B4, quarter note C5, quarter note B4, quarter note A4. Measure 4: quarter note G4, quarter note A4, quarter note B4, quarter note C5, quarter note B4, quarter note A4.

5 6 7 8

Musical notation for Level 4, measures 5-8. Treble clef, key signature of one sharp (F#), 6/8 time signature. Measure 5: quarter note G4, quarter note A4, quarter note B4, quarter note C5, quarter note B4, quarter note A4. Measure 6: quarter note G4, quarter note A4, quarter note B4, quarter note C5, quarter note B4, quarter note A4. Measure 7: quarter note G4, quarter note A4, quarter note B4, quarter note C5, quarter note B4, quarter note A4. Measure 8: quarter note G4, quarter note A4, quarter note B4, quarter note C5, quarter note B4, quarter note A4.

Level 5

1 2 3 4 3

Musical notation for Level 5, measures 1-4. Treble clef, key signature of one sharp (F#), 4/4 time signature. Measure 1: quarter note G4, quarter note A4, quarter note B4, quarter note C5, quarter note B4, quarter note A4. Measure 2: quarter note G4, quarter note A4, quarter note B4, quarter note C5, quarter note B4, quarter note A4. Measure 3: quarter note G4, quarter note A4, quarter note B4, quarter note C5, quarter note B4, quarter note A4. Measure 4: quarter note G4, quarter note A4, quarter note B4, quarter note C5, quarter note B4, quarter note A4.

5 6 7 8

Musical notation for Level 5, measures 5-8. Treble clef, key signature of one sharp (F#), 4/4 time signature. Measure 5: quarter note G4, quarter note A4, quarter note B4, quarter note C5, quarter note B4, quarter note A4. Measure 6: quarter note G4, quarter note A4, quarter note B4, quarter note C5, quarter note B4, quarter note A4. Measure 7: quarter note G4, quarter note A4, quarter note B4, quarter note C5, quarter note B4, quarter note A4. Measure 8: quarter note G4, quarter note A4, quarter note B4, quarter note C5, quarter note B4, quarter note A4.

FVA All State 2012 - 2013

High School Sight Reading Audition

Level 1

1 2 3 4 5 6 7 8

Musical notation for Level 1, 8 measures in 4/4 time. The key signature has one flat (B-flat). The notes are: 1. G2, 2. A2, 3. Bb2, 4. C3, 5. D3, 6. E3, 7. F3, 8. G3. The notes are grouped into pairs: (1,2), (3,4), (5,6), (7,8). The notes are: G2, A2, Bb2, C3, D3, E3, F3, G3.

Level 2

1 2 3 4 5 6 7 8

Musical notation for Level 2, 8 measures in 4/4 time. The key signature has one flat (B-flat). The notes are: 1. G2, 2. A2, 3. Bb2, 4. C3, 5. D3, 6. E3, 7. F3, 8. G3. The notes are grouped into pairs: (1,2), (3,4), (5,6), (7,8). The notes are: G2, A2, Bb2, C3, D3, E3, F3, G3.


Level 3

1 2 3 4 5 6 7 8


Musical notation for Level 3, 8 measures in 4/4 time. The key signature has one flat (B-flat). The notes are: 1. G2, 2. A2, 3. Bb2, 4. C3, 5. D3, 6. E3, 7. F3, 8. G3. The notes are grouped into pairs: (1,2), (3,4), (5,6), (7,8). The notes are: G2, A2, Bb2, C3, D3, E3, F3, G3.

Level 4

1 2 3 4




5 6 7 8




Detailed description: This block contains the first two staves of music for Level 4. The first staff contains measures 1 through 4, and the second staff contains measures 5 through 8. The music is written in bass clef with a key signature of one sharp (F#) and a time signature of 6/8. The notes are: Staff 1: M1: G2, A2, B2, C3, D3; M2: E3, F#3, G3, A3, B3; M3: C4, D4, E4, F#4, G4; M4: A4, B4, C5, D5, E5. Staff 2: M5: F#4, G4, A4, B4, C5, D5; M6: E5, F#5, G5, A5, B5; M7: C6, D6, E6, F#6, G6; M8: A6, B6, C7, D7, E7.

Level 5

1 2 3 4



5 6 7 8



Detailed description: This block contains the second two staves of music for Level 5. The first staff contains measures 1 through 4, and the second staff contains measures 5 through 8. The music is written in bass clef with a key signature of one sharp (F#) and a time signature of common time (C). The notes are: Staff 3: M1: G2, A2, B2, C3, D3; M2: E3, F#3, G3, A3, B3; M3: C4, D4, E4, F#4, G4; M4: A4, B4, C5, D5, E5. Staff 4: M5: F#4, G4, A4, B4, C5, D5; M6: E5, F#5, G5, A5, B5; M7: C6, D6, E6, F#6, G6; M8: A6, B6, C7, D7, E7.