




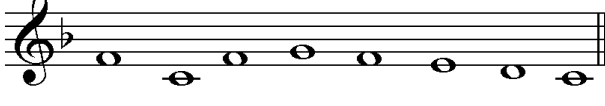

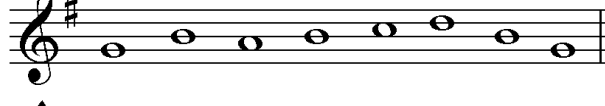




**FLORIDA 7-8 ALL-STATE CHORUS
MUSICIANSHIP TEST 2008-2009**

Congratulations on being selected to audition for the All-State Chorus! This part of the audition will test your basic music theory skills. Please LISTEN to instructions and read ALL DIRECTIONS carefully. Mark your answers on the answer sheet provided. ALL ANSWERS WILL BE LETTERS. You may write on this test, but only your answer sheet will be graded. Ask your proctor for a new test if this one has writing on it.

LISTENING SKILLS

If what you SEE is exactly the same as what you HEAR, mark "A" on your answer sheet. If it is different in any way, mark "B". You will hear each example two times. Follow numbers down then across the page.

I. RHYTHM	II. MELODY (MELODIC LINE):
1. 	6. 
2. 	7. 
3. 	8. 
4. 	9. 
5. 	10. 

III. RHYTHM AND PITCH (Melodic Line):

Choose the measure that is played **WRONG** (either rhythm OR pitch), and then mark that letter ("B", "C", "D", or "E") on your answer sheet. If an entire exercise is played CORRECTLY, mark "A" on your answer sheet. You will hear each example two times.

11.	B	C	D	E	
12.	B	C	D	E	
13.	B	C	D	E	

IV. MAJOR AND MINOR (You will hear each example two times.)

Choices: If the chord you hear is **MAJOR**, mark “A” on your answer sheet.
If the chord you hear is **MINOR**, mark “B” on your answer sheet.

14.

15.

16.

V. LISTENING TO INTERVALS: (You will hear each example two times.)

Listen carefully to each interval then choose which interval was played from the three choices provided.

Choices: **A. Seventh** **B. Third** **C. Fifth**

17.

18.

19.

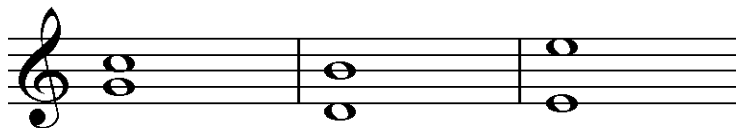
VI. INTERVAL RECOGNITION: Name the interval.

Choices: **A. Sixth** **B. Octave** **C. Fourth** **D. Seventh** **E. Fifth**

20.

21.

22.

**VII. KEY RECOGNITION:** Name the key signature from the choices below.

23. **A. Db Major**
B. A Major
C. Eb Major

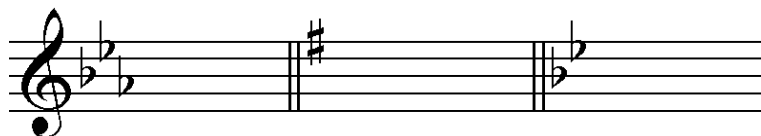
24. **A. A Major**
B. G Major
C. F# Major

25. **A. D Major**
B. Bb Major
C. Eb Major

23.

24.

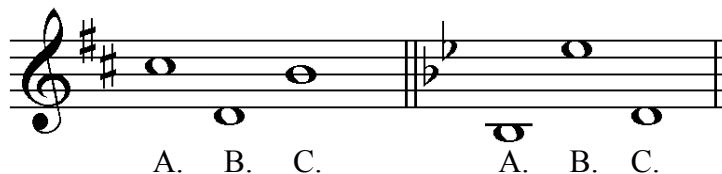
25.



Look at the **Major Key Signature** of each example below and then choose the note that is “do” or “one” (the tonic) in that key. Mark **A, B, or C** as the correct answer (not the pitch name) on your answer sheet.

26.

27.



A. B. C.

A. B. C.

VIII. TIME SIGNATURES:

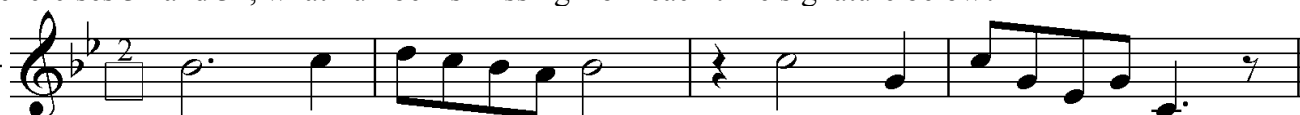
In exercises 28 – 30, choose the measure that is **WRONG** (incorrect # of counts). If all measures are correct in any exercise, mark "A" on your answer sheet.

28. 

29. 

30. 

In exercises 31 and 32, what number is missing from each time signature below?

31. 

Choices: A. 4 B. 6 C. 2 D. 8

32. 

Choices: A. 4 B. 2 C. 6 D. 8

In exercises 33 and 34, what note or rest is missing from each example below?

33. 

Choices: A. Quarter Note B. Sixteenth Rest C. Half Rest D. Eighth Note

34. 

Choices: A. Quarter Rest B. Sixteenth Rest C. Eighth Rest D. Half Note

IX. VOCABULARY AND SYMBOL IDENTIFICATION

Choose the best answer for each symbol and word selected. All choices will not be used.

35.-38. Excerpt from “*The Stuttering Lovers*”

"Faith, if that's the way you're minding the corn I'll do it my-self in the m-m-m-m-m

Choices: A. Don't breathe B. Slur C. Crescendo D. Breath mark E. Suddenly soft

39.-41. Excerpt from “*O, To Make a Jubilant Song*”

O, to make a, O, to make a song, a ju - bi-lant song!

Choices: A. Return to original tempo B. Sharp C. First tempo D. Very loud E. Accidental

42.-44. Excerpt from “*When I Think of You*”

Gently and very legato ♩ = 84-88 mp

Choices:
A. Slow and leisurely B. Metronome marking C. Sweetly D. Medium soft E. Smoothly

45.-47. Excerpt from “*Cuncti simus*”

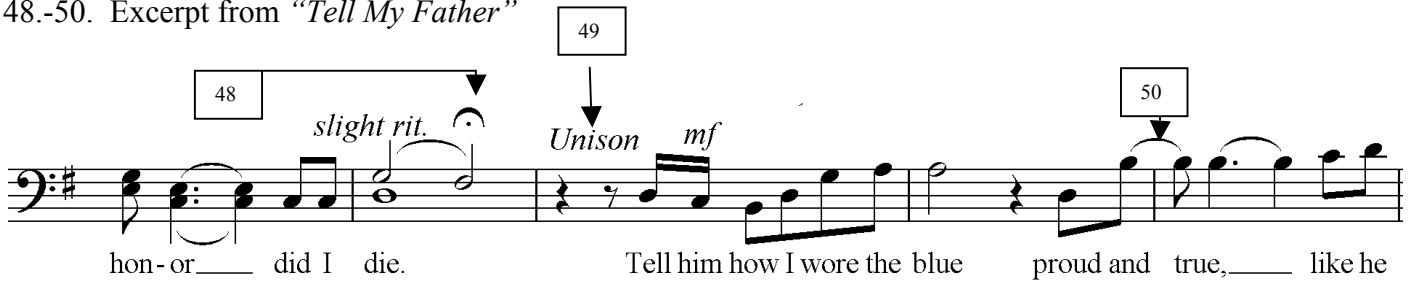


Musical notation for the excerpt from “*Cuncti simus*”. The notation is on a single staff in treble clef with a key signature of one sharp (F#). The lyrics are: Cun -cti si - mus con - ci - men - tes A - ve, Ma - ri - a. There are three numbered boxes: box 45 points to the word “Cun”, box 4 points to the word “men”, and box 47 points to the end of the phrase “Ma - ri - a.”. The word “Tutti” is written above the staff at the beginning.

Choices:

A. All sing together B. Repeat sign C. Perform without a break D. Back to sign E. Tie

48.-50. Excerpt from “*Tell My Father*”



Musical notation for the excerpt from “*Tell My Father*”. The notation is on a single staff in bass clef with a key signature of one sharp (F#). The lyrics are: hon - or ___ did I die. Tell him how I wore the blue proud and true, ___ like he. There are three numbered boxes: box 48 points to the word “die.”, box 49 points to the word “blue”, and box 50 points to the word “true,”. The word “Unison” is written above the staff, and “mf” (mezzo-forte) is written below the staff. The instruction “slight rit.” (slight ritardando) is written above the staff.

Choices:

A. All sing same pitch B. Fermata C. Tie D. Medium Loud E. Gradually slower

Check your answers carefully. Erase all stray marks from your answer sheet. Wait quietly for directions from your test monitor.