



**III. RHYTHM AND PITCH**  
(Melodic Line)

Choose the measure that is played **WRONG** (either rhythm OR pitch), and then mark that letter on your answer sheet. \*If an entire exercise is played **CORRECTLY**, mark "A" on your answer sheet. You will hear each example two times.

11 B. C. D. E.

12 B. C. D. E.

13 B. C. D. E.

**IV. MAJOR AND MINOR** (You will hear each example two times)

If the chord you hear is **MAJOR**, mark "A: on you answer sheet.  
If the chord you hear is **MINOR**, mark "B: on your answer sheet.

14.

15.

16.

**V. LISTENING TO INTERVALS:** ( You will hear each example two times)

Listen carefully to each interval then choose which interval was played from the three choices provided.

17.

18.

19.

Choices:

A. Second

B. Fifth

C. Fourth

**VI. INTERVAL RECOGNITION:** Name the interval

20.

21.

22.

Choices:

A. Third

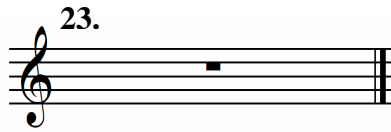
B. Fourth

C. Octave

D. Sixth

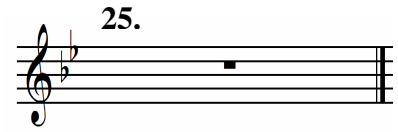
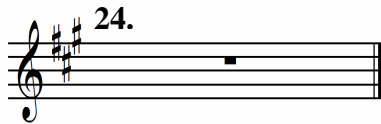
E. Second

**VII. Key Recognition:** Name the Key



23.  
 A. C Major  
 B. G Major  
 C. F Major

24.  
 A. A Major  
 B. G Major  
 C. F# Major



25.  
 A. Eb Major  
 B. Bb Major  
 C. Db Major

Look at the **Major Key Signature** of each example below and then choose the note that is “do” or “one” (the tonic) in that key. Mark the **A, B or C** of the correct answer (not the note name) on your answer sheet.



- A.      B.      C.



- A.      B.      C.

**VIII. TIME SIGNATURES:** Look carefully at the **time signature** and answer exercises 28-34.

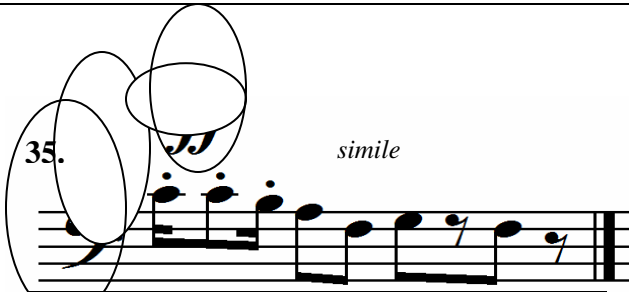
Choose the measure that has a **syncopated rhythm** and then mark that letter on your answer sheet.



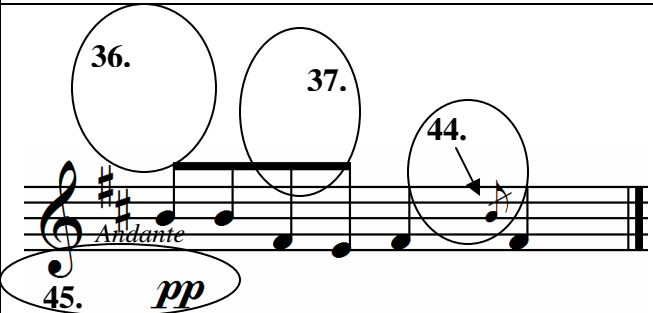


### IX. VOCABULARY AND SYMBOL IDENTIFICATION

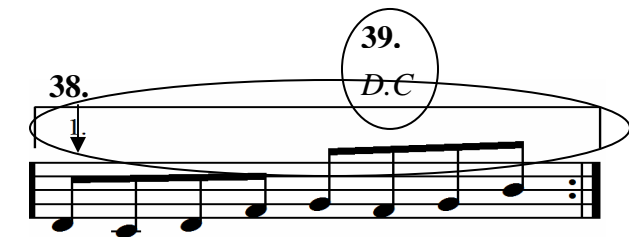
Choose the best answer for each symbol and word circled. Make sure to follow the numbers across each box and then down the page.

35.  *simile*

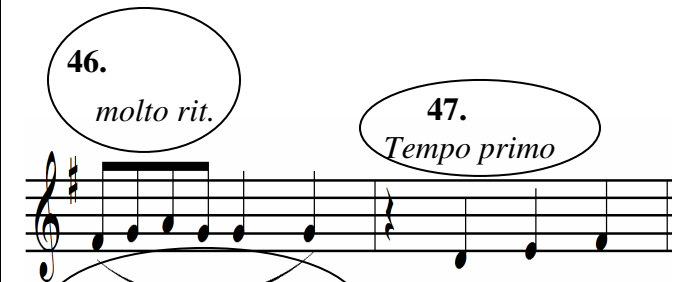
- A. *ba*      A. very soft   B. grace note   C. small note  
 D. *V<sub>e</sub>*      D. moderately   E. walking tempo

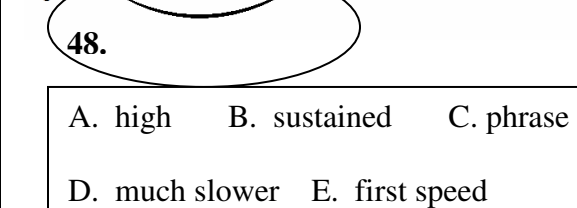
36.  *Andante*  
 45. *pp*

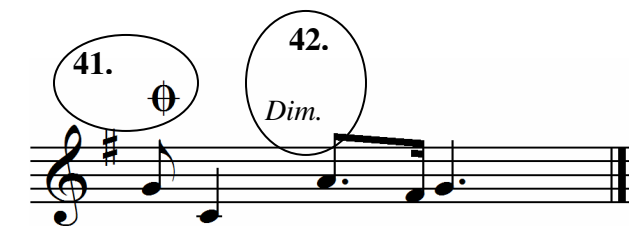
43.

38.  *D.C.*

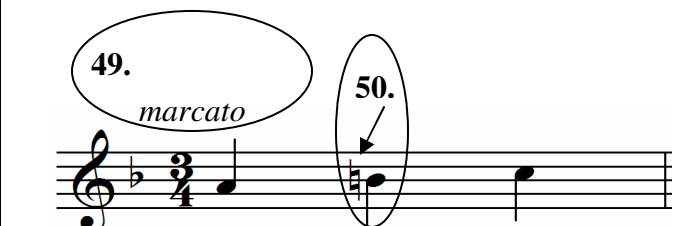
40. *Ad lib*  
 A. coda      B. repeat from the beginning  
 C. freely    D. 1<sup>st</sup> ending   E. slow tempo

46. *molto rit.*      47. *Tempo primo*  


48.   
 A. high      B. sustained    C. phrase  
 D. much slower   E. first speed

41.  *Dim.*

- A. sustained   B. coda   C. hold  
 D. gradually softer   E. sweetly

49. *marcato*      50. 

- A. the end      B. the key center  
 C. marked    D. natural    E. detached